

# PVC Free Sheet Wallcovering Installation Instructions

**KnollTextiles**

**Do not discard; Please read before hanging wallcovering.**

PLEASE NOTE: EXTRA CARE MUST BE TAKEN DURING INSTALLATION AS THIS PRODUCT IS MORE SUSCEPTIBLE TO CREASING THAN TRADITIONAL VINYL WALLCOVERING PRODUCTS.

## **Installation Instructions**

For best results, KnollTextiles recommends that a qualified wallcovering installer is employed.

## **Terms and Conditions**

- Material must be examined prior to installation.
- Please check that all rolls are the correct color, pattern or direction.
- No claims will be allowed for hanging the wrong color or pattern.
- No adjustments will be allowed after the material is cut.
- Material should be tested by hanging NO MORE THAN 3 STRIPS. If you have any questions after hanging the first 3 strips, call Customer Service at 866-565-5858. KnollTextiles will not be responsible for any labor costs thereafter.

## **Wall Preparation**

- All previous wallcovering and paint residue should be removed, and surface protrusions and low spots sanded and filled so that hanging surface is clean, smooth, and thoroughly dry.
- KnollTextiles does not recommend installing wallcovering over existing material.
- Glossy surfaces should be sanded to dull the surface, and dust removed with a dry cloth.
- Surface should be thoroughly sealed; a quality wallcovering primer should be used on all surfaces.
- Lining the walls is usually not needed. The installer should determine if necessary.
- If a paper or canvas liner is thought necessary, the same heavy duty vinyl adhesive with low water content should be used as on the actual wallcovering. This will prevent mildew.
- Any mildew must be removed from the walls and surfaces treated to inhibit further mildew growth.
- Acceptable hanging surfaces must be clean, smooth, thoroughly dry and structurally intact.
- Freshly plastered walls must be dry before application.
- Surface color should be uniform throughout the installation area. Variations in wall color may affect overall appearance of goods after installation.
- The temperature in the area of installation and/or storage should be maintained above 55° F at all times.
- Adequate lighting is necessary for a proper installation.

For additional information,  
please contact Customer Service at  
textiles\_orders@knoll.com or 866.565.5858.  
[knolltextiles.com](http://knolltextiles.com)

## Adhesive

- Hang wallcovering with a premium quality, heavy-duty, clear, pre-mixed adhesive.
- Use of any other type of adhesive will be solely at the risk of the installers.
- Allow adhesive to become tacky before applying wallcovering.
- Brush an even coat of paste over entire back of wallcovering. Gently double material together and “book” material for ten minutes. Do not fold or crease booked material.

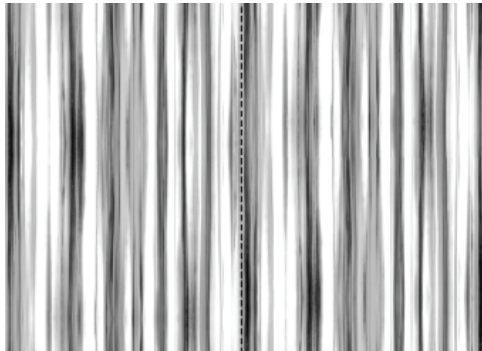
## Application

- Review the recommended hanging direction for pattern.
- Any wallcovering design that does not have specific direction or horizontal match could be installed by reversing alternate strips to ensure color uniformity at the seams.
- Cut rolls in sequential order starting with the highest number and working down to the lowest number. Number panels and headers as they are cut from the roll and apply to the wall in the same sequence.
- Use only lead pencil for marking walls and back of wallcovering. Do not use ballpoint or marking pen because they will bleed through the surface.
- Markings on lighter color materials may telegraph through to the face. It is recommended that you use an alternate method to indicate “top”, “bottom” and sequence numbers.
- If working with multiple lots, make certain that the lot numbers are separated at break points, such as corners. (DO NOT INTERMINGLE MULTIPLE LOTS)
- Each panel should be hung plumb (straight up & down).
- The wallcovering should be overlapped and double cut. Use of a straight-edge and a razor is recommended. Blades must be changed after every cut.
- Ordinary dirt and smudges can be removed using a soft, lint-free cloth with mild soap and warm water.

Pattern Name	Pattern Number	Repeat	Recommended Installation
Big Floral	WC2460	50" (H) 120" (V)	Half drop match/straight hang
Cascade	WC2244	50" (H) 60" (V)	Pattern match/straight hang
Meander	WC2246	51" (H) 120" (V)	Random match/straight hang
Sway	WC1581	72" V	Random match/straight hang
Swerve	WC1582	54" V	Match/straight hang
Surround	WC2248	50" (H) 60" (V)	Pattern match/straight hang
Swoosh	WC1583	54" V	Match/straight hang
Windswept	WC2435	18" V	Match/straight hang

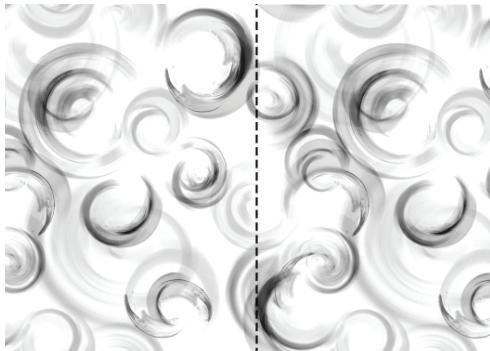
For additional information,  
please contact Customer Service at  
textiles\_orders@knoll.com or 866.565.5858.  
[knolltextiles.com](http://knolltextiles.com)

Sway WC1581



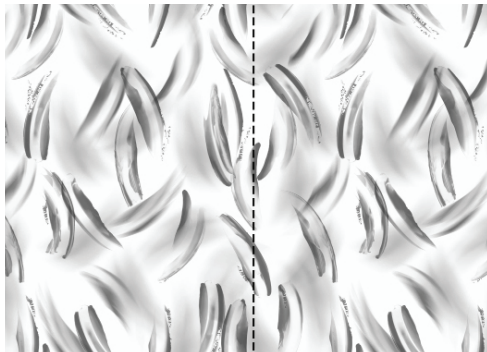
Random match/straight hang

Swerve WC1582



Match/straight hang

Swoosh WC1583



Match/straight hang

For additional information,  
please contact Customer Service at  
[textiles\\_orders@knoll.com](mailto:textiles_orders@knoll.com) or 866.565.5858.  
[knolltextiles.com](http://knolltextiles.com)