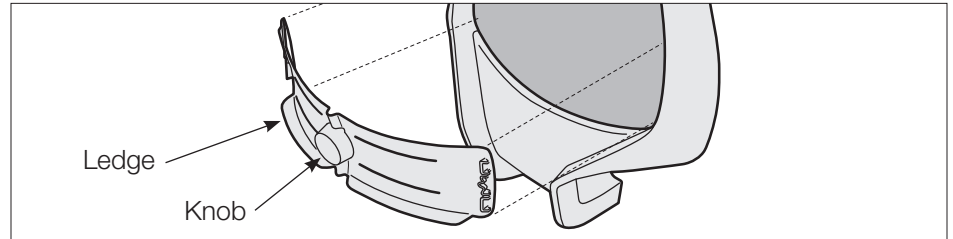


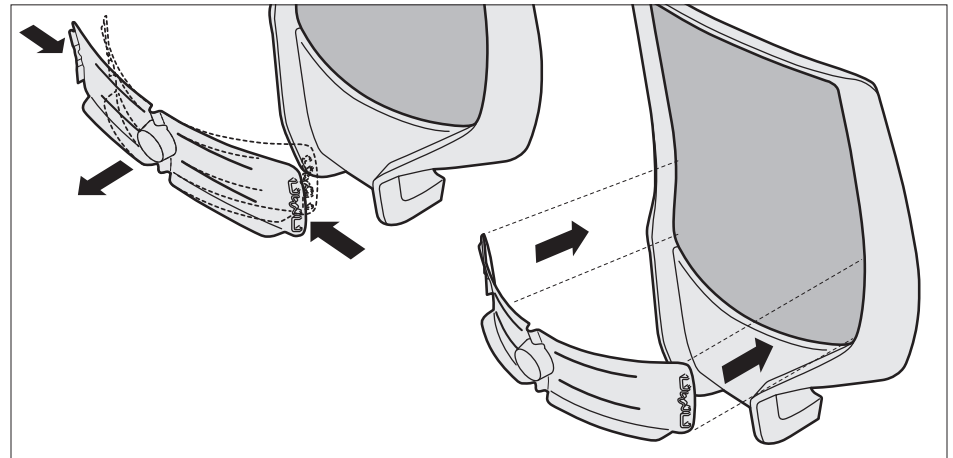
# k. task Chair Lumbar Installation Instructions

Pattern number : K-T-LUMBAR

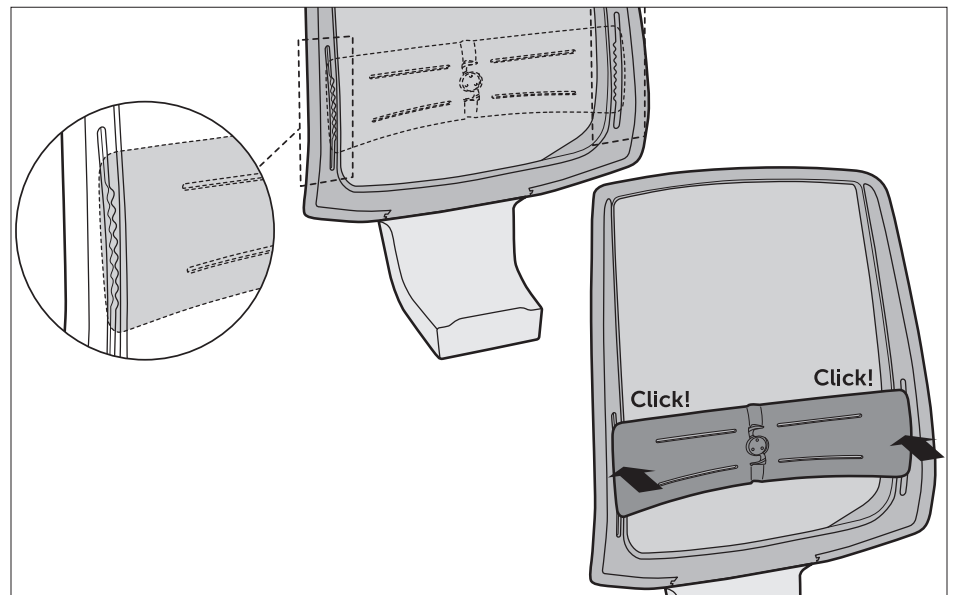
1. Orient the lumbar so the ledge is on the bottom and the knob is facing out.



2. Slightly bend the lumbar and place it between the frame and the mesh on the bottom half of the back.



3. Once in position, press the lumbar into the backrest until it clicks on both sides.



4. Move the lumbar up and down using the ledge several times to ensure proper operation.

