



Custom Capabilities

KnollTextiles

Custom Capabilities

KnollTextiles can create custom colorations, modify an existing pattern, translate a product for another use, or help realize a more complex design of your own creation for upholstery, drapery, wallcovering or panel applications.

Products in these rotations represent a collection of successful custom interpretations of standard KnollTextiles for special projects. All fabrics are subject to availability or set minimums.

Custom Color

There are generally three different methods to achieve custom color: piece dye, yarn dye, and printed.

Reengineered

Translation of a pattern to meet different application, performance, price point, or scale.

Ground Up Custom

New design development which is typically a special graphic image, logo, or visual concept provided by the client.

Custom fabrics have set minimums and special terms (see individual sample labels for details). Please contact the custom team for availability and additional details on samples in these rotations. All patterns are copyrighted to KnollTextiles and cannot be reproduced in whole or part by another manufacturer.

**Pricing is subject to change; please inquire before quoting.*

KnollTextiles



Upholstery Rotation

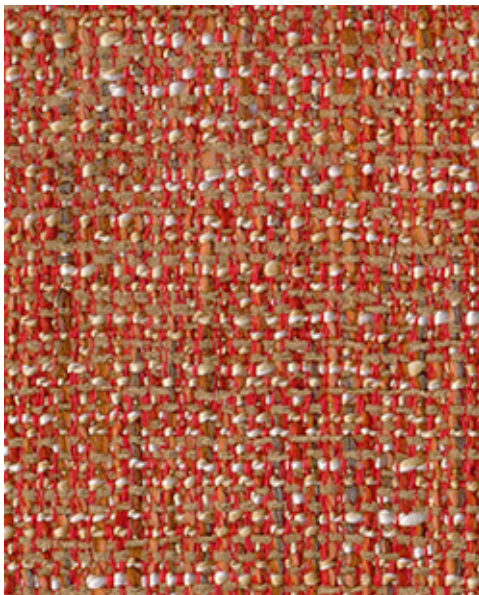
1. Diva, Coral (QK38954.01)
2. Lancashire, Orchard (QK38968.01)
3. Eclat Weave Poly, Silver Grey (QK38818)
4. Utmost, Mustard (QK38428.30)
5. Hourglass, Lime Green (QK38763.02)
6. Cato, Seaglass (QK38382.03)
7. Custom Magnolia, Tourmaline (QK38911.02)
8. Rivington, Blue Grey (QK38963.01)
9. Marcel, Cranberry (QK38688.04)
10. Cato, Aubergine (QK38382.02)
11. Journey, Sugar Plum (QK38948.01)
12. VE Firefly, Knight (QK38986.01)
13. VE Woodland, Night Sky (QK39039.01)

Upholstery / Selling Points

- Archive color blankets are available on most upholstery products which allow for quicker turnaround
- Reengineered products are translations that meet commercial performance guidelines
- Finishes and backing can be added, removed or changed for performance, end-use or environmental reasons
- Many upholstery fabrics in our line carry a one-piece minimum
- Piece-dyed products offer flexibility in color matching to most any reference
- Custom products stocked for ongoing standards programs

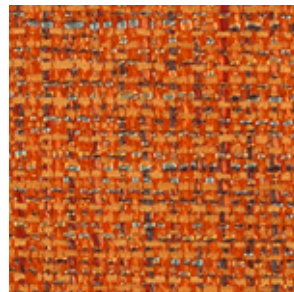
Diva, Coral QK38954.01

The customer loved the price point and texture of standard upholstery, Diva K2051. Customs created a special color to work within the designer's palette.



Product Points

Primary Use:	Upholstery
Content:	Acrylic 45%, polyester 55%
Width:	54"
Minimum:	100 yds
Type:	Custom Color



KnollTextiles

Standard Fabric Inspiration:
Diva, Saffron K2051/3

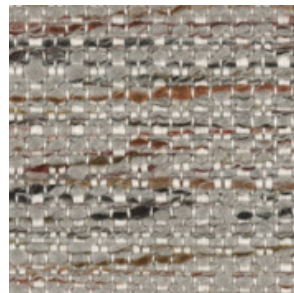
Lancashire, Orchard QK38954.01

The client selected standard upholstery Rivington, Orchard K1080/10 however the project budget called for a less expensive textile. Customs sourced a textural fabric and colored it to match.



Product Points

Primary Use:	Upholstery
Content:	Polyester 78%, viscose 22%
Width:	54"
Minimum:	600 yds
Type:	Reengineered



KnollTextiles

Standard Fabric Inspiration:
Rivington, Orchard K1080/10

Eclat Weave Poly, Silver Gray QK38818

The client selected standard upholstery Eclat Weave, Silver K1104/4. The hospitality budget required a less expensive version. Customs value engineered the textile in 100% polyester yarns.



Product Points

Primary Use:	Upholstery
Content:	Polyester 100%
Width:	54"
Minimum:	500 yds
Type:	Reengineered

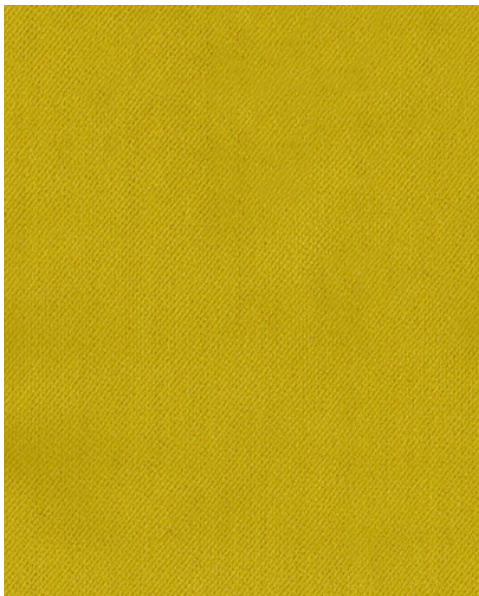


KnollTextiles

Standard Fabric Inspiration:
Eclat Weave, Silver K1104/4

Utmost, Mustard QK38428.30

The client was looking for a high performance plush in a mustard yellow color. Customs selected Highland, Honeydew K2010/4 for shade reference to create the special color of Utmost.



Product Points

Primary Use:	Upholstery
Content:	Trevira CS Polyester, 100%
Width:	54"
Minimum:	44 yds
Type:	Custom Color



KnollTextiles

Standard Fabric Inspiration:
Highland, Honeydew K2010/4

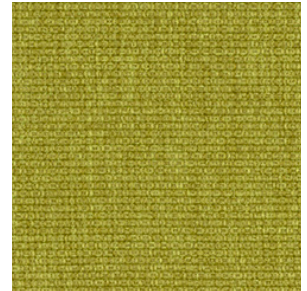
Hourglass, Lime QK38763.02

The client provided a Pantone and also referenced standard upholstery Delite Green K2026/6 for color direction. Customs provided lab dip samples to match the color target.



Product Points

Primary Use:	Upholstery
Content:	PCR Poly 77%, polyester 15%, nylon 8%
Width:	54"
Minimum:	280 yds
Type:	Custom Color

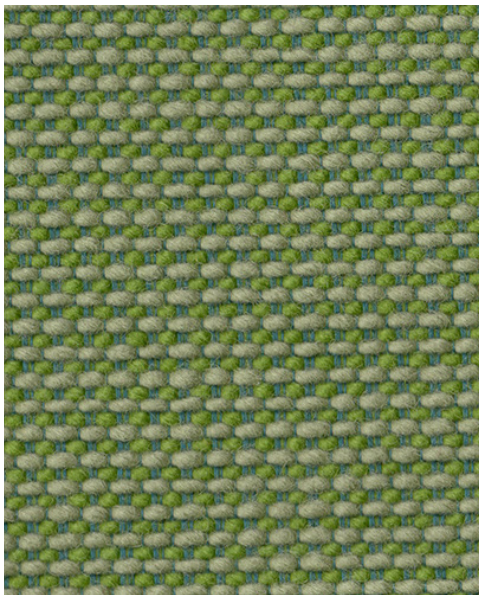


KnollTextiles

Standard Fabric Inspiration:
Delite, Green K2026/6

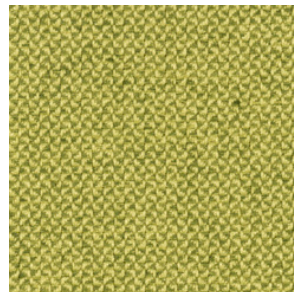
Cato, Seaglass QK38382.03

Hourglass, Spring K1532/16 was selected as the overall color direction to customize Cato to fit within the client's project specification.



Product Points

Primary Use:	Upholstery
Content:	Wool 86%, rayon 14%
Width:	54"
Minimum:	200 yds
Type:	Custom Color



KnollTextiles

Standard Fabric Inspiration:
Hourglass, Spring K1532/16

Custom Magnolia, Tourmaline QK38911.02

The client selected standard Magnolia, Tourmaline K1999/2, however needed to remove the stain repellent finish to meet LEED criteria for the project.



Product Points

Primary Use:	Upholstery
Content:	Poly 58%, PCR poly 20%, SD nylon 22%
Width:	54"
Minimum:	60 yds
Type:	Reengineered

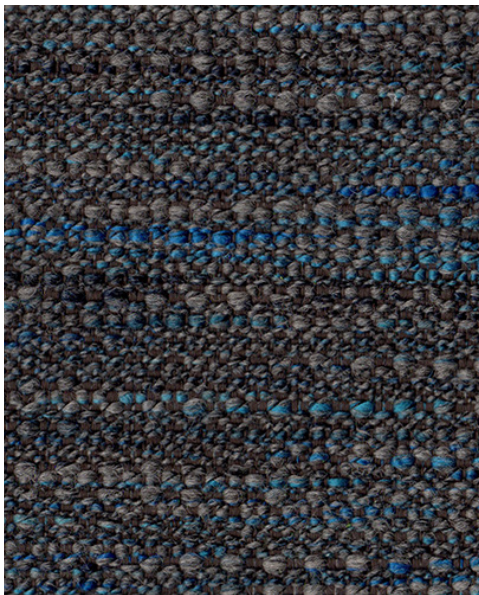


KnollTextiles

Standard Fabric Inspiration:
Magnolia, Tourmaline K1999/2

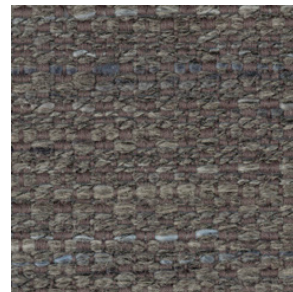
Rivington, Blue Grey QK38963.01

Client selected two standard colors in Rivington: Ash Grey K1080/9 and Sapphire K1080/2 to blend into a new colorway.



Product Points

Primary Use:	Upholstery
Content:	Acrylic 28%, co 28%, poly 6%, wool 38%
Width:	54"
Minimum:	110 yds
Type:	Custom Color



KnollTextiles

Standard Fabric Inspiration:
Rivington, Orchard K1080/10

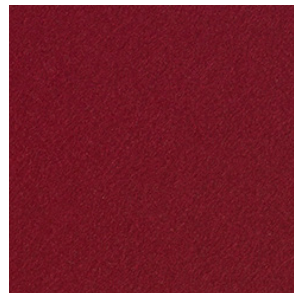
Marcel, Cranberry QK38688.04

The client requested a heavier weight velvet (24 oz per linear yard) for drapery in a custom color to match Highland, Ruby K2010/7.



Product Points

Primary Use:	Upholstery
Content:	Trevira CS Polyester 100%
Width:	54"
Minimum:	55 yds
Type:	Reengineered

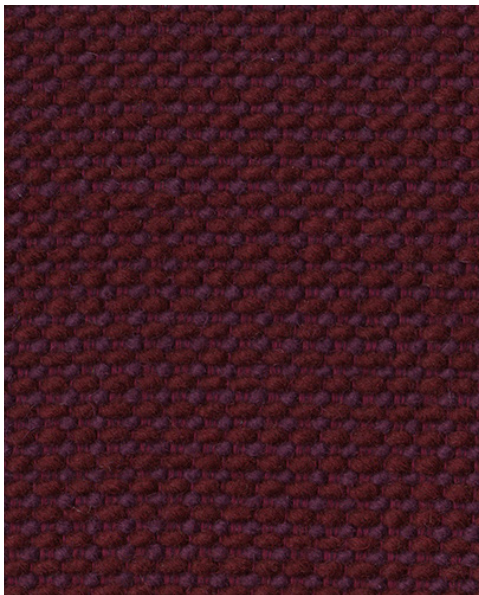


KnollTextiles

Standard Fabric Inspiration:
Highland, Ruby K2010/7

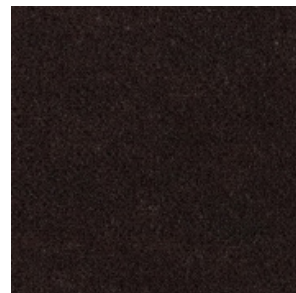
Cato, Aubergine QK38382.02

Client selected Knoll Velvet, Espresso K784/79 for overall color direction to create a coordinating custom color of Cato.



Product Points

Primary Use:	Upholstery
Content:	Wool 86%, rayon 14%
Width:	54"
Minimum:	200 yds
Type:	Custom Color

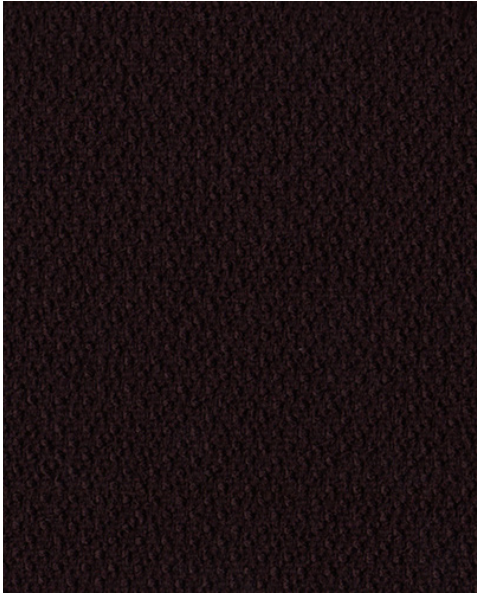


KnollTextiles

Standard Fabric Inspiration:
Knoll Velvet, Espresso K784/79

Journey, Sugar Plum QK38948.01

The client requested a textural solid to match Utmost, Sugar Plum K1325/14 to meet the project budget.



Product Points

Primary Use:	Upholstery
Content:	Polyester 50%, PCR Polyester 50%
Width:	54"
Minimum:	160 yds
Type:	Custom Color

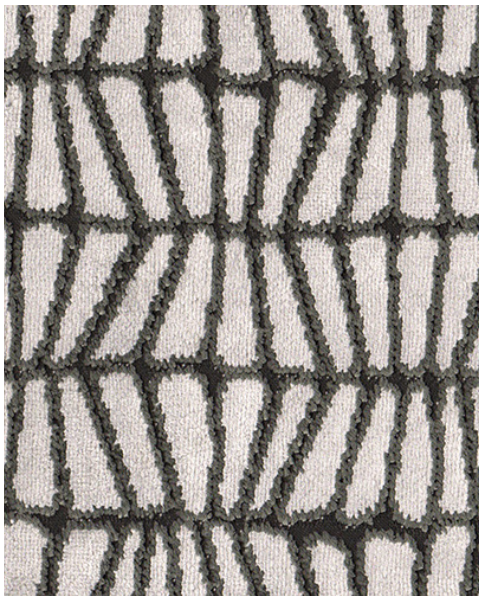


KnollTextiles

Standard Fabric Inspiration:
Utmost, Sugar Plum K1325/14

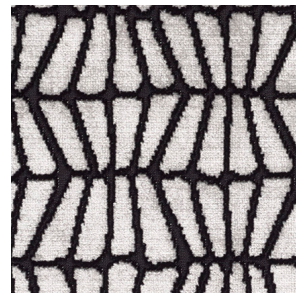
VE Firefly, Knight QK38986.01

Client selected Firefly, Emperor K202/17. Due to project budget, the pattern was redeveloped in a less expensive construction.



Product Points

Primary Use:	Upholstery
Content:	Polyester 78%, Viscose 22%
Width:	54"
Minimum:	Please inquire
Type:	Reengineer



KnollTextiles

Standard Fabric Inspiration:
Firefly, Emperor K202/17

VE Woodland, Night Sky QK39039.04

The client selected standard upholstery Woodland . The hospitality budget required a less expensive version. Customs value engineered the textile in 100% polyester yarns.



Product Points

Primary Use:	Upholstery
Content:	71% Polyester, post-consumer recycled polyester 18%, post-industrial recycled polyester 11%
Width:	57"
Minimum:	300 yards
Type:	Reengineer



KnollTextiles

Standard Fabric Inspiration:
Woodland Blue Spruce K2049/3



Wallcovering + Panel Rotation

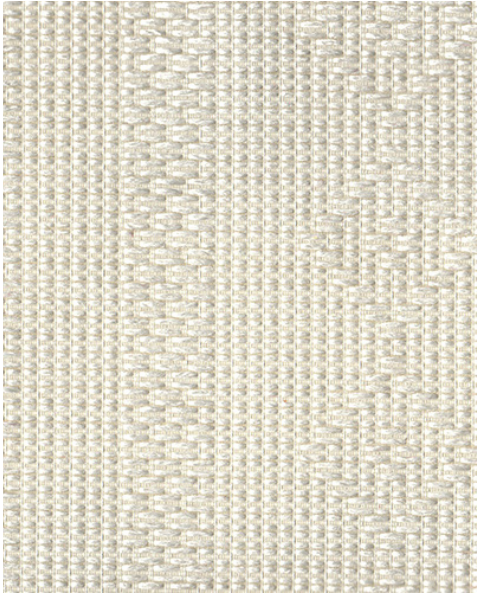
1. Djenne Panel, Frost (QK38927.01)
2. Micro VE, Marble (QK38502.02)
3. Custom Transfer, Mirror (QK38865.01)
4. Statement, Dove (QK38923.01)
5. Foundation, Greystone (QK38530.02)
6. Legend Panel, Ebony (QK38710)
7. Element, Aquarium (QK38835)
8. Versatility, Poppy (QK38884.03)
9. Versatility, Sunflower (QK38884.04)
10. Merge Large Print, Mars (QK38999.01)
11. Glisten, Spa Blue (QK38483)
12. Innuendo, Autumn (QK38980.01)
13. Nature Walk Wall (QK38994.01)
14. Linen Metallic, Charcoal (QK38706.03A)
15. Metallic Spin, Taupe (QK38697B)
16. Mica Plain, Mist (QK38760)
17. Tweed Wall, Pepper (QK38995.01)
18. Cleo Wall, Fox (QK39030.01)

Wallcovering + Panel / Selling Points

- Custom color as a way to highlight walls or workstation accents
- Digital printing offers flexibility of design for feature wall or wrapped panel
- Our standard line can be used as a toolbox for sparking a client's ideas
- Custom can work with a design firm's own artwork or create new art
- Alternate wallcovering substrates are available for design, budget, or environmental purposes

Djenne Panel, Frost QK38927.01

Standard upholstery: Djenne, Salt K2029/2 was redeveloped in a polyester construction for panel application.



Product Points

Primary Use:	Panel
Content:	Polyester 100%
Width:	66"
Minimum:	500 yds
Type:	Reengineered

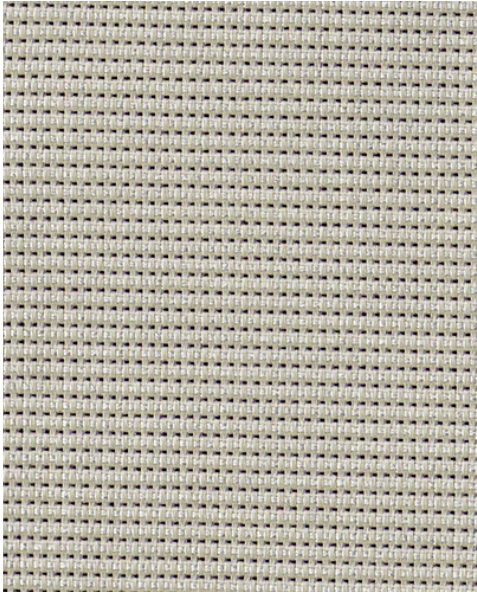


KnollTextiles

Standard Fabric Inspiration:
Djenne, Salt K2029/2

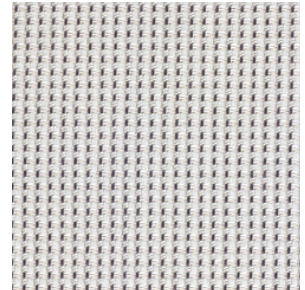
Micro VE, Marble QK38502.02

Client selected Micro panel fabric but needed the material to be a Grade 10. Customs redeveloped the pattern to meet the project budget.



Product Points

Primary Use:	Panel
Content:	Polyester 100%
Width:	66"
Minimum:	300 yds
Type:	Reengineer



KnollTextiles

Standard Fabric Inspiration:
Micro, Alabaster W465/2

Custom Transfer, Mirror QK38865.01

Client wanted to use Transfer wallcovering in an upholstered application but fabric was too stiff. Customs offered an alternate finish with a softer hand that met the application requirements.



Product Points

Primary Use:	Panel
Content:	Polyester 100%
Width:	66"
Minimum:	500 yds
Type:	Reengineered

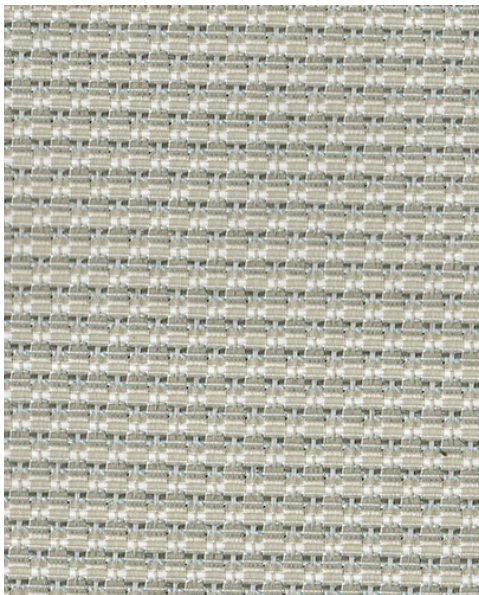


KnollTextiles

Standard Fabric Inspiration:
Transfer, Mirror WC1823/4

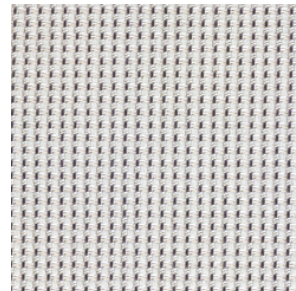
Statement, Dove QK38923.01

Customs worked with the customer to develop a coordinating fabric to Micro W465 that was already being used on the project.



Product Points

Primary Use:	Panel
Content:	Polyester 100%
Width:	66"
Minimum:	300 yds
Type:	Reengineer



KnollTextiles

Standard Fabric Inspiration:
Micro, Alabaster W465/2

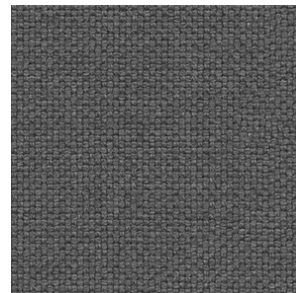
Foundation, Greystone QK38530.02

Customer referenced standard fabric Alter Ego, Charcoal K2140/20 for matching in a custom color of Foundation to meet project requirements.



Product Points

Primary Use:	Panel
Content:	Polyester 100%
Width:	66"
Minimum:	215 yds
Type:	Custom Color



KnollTextiles

Standard Fabric Inspiration:
Alter Ego, Charcoal K2140/20

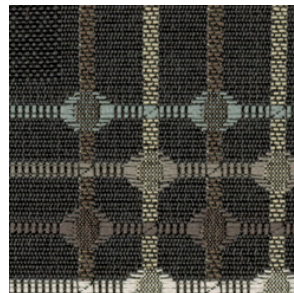
Legend Panel, Ebony QK38710

The inspiration for this custom was Legend, Xanadu HC1124/9. Customs developed a large scale modified version for panel application.



Product Points

Primary Use:	Panel
Content:	Polyester 100%
Width:	66"
Minimum:	120 yds
Type:	Reengineer

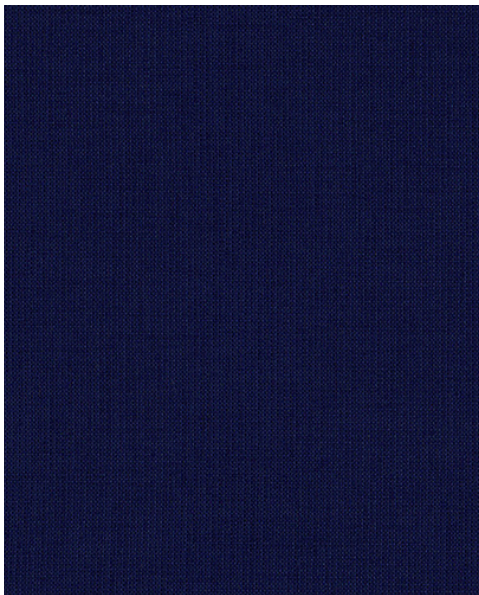


KnollTextiles

Standard Fabric Inspiration:
Legend, Xanadu HC1124/9

Element, Aquarium QK38835

Customer referenced standard fabric Pivot, Aquarium W1926/11 for matching in a custom color of Element.



Product Points

Primary Use:	Panel
Content:	Polyester 100%
Width:	66"
Minimum:	300 yds
Type:	Custom Color



KnollTextiles

Standard Fabric Inspiration:
Pivot Aquarium W1926/11

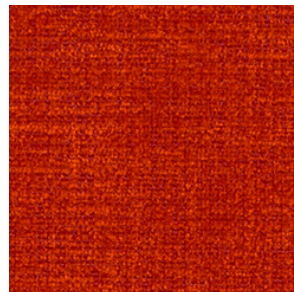
Versatility, Poppy QK38884.03

The inspiration for color was Summit, Sunset K2020/2. The client wanted a pop of color on the panels and Customs selected a piece dyed panel fabric, Versatility, to meet the project requirement.



Product Points

Primary Use:	Panel
Content:	Polyester 100%
Width:	66"
Minimum:	440 yds
Type:	Custom Color

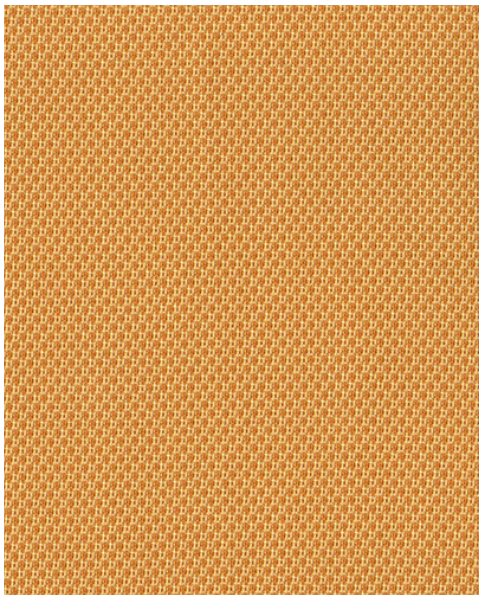


KnollTextiles

Standard Fabric Inspiration:
Summit, Sunset K2020/2

Versatility, Sunflower QK38884.04

The customer provided a paint swatch to custom color standard Versatility W432 to a golden yellow to work within the project palette.



Product Points

Primary Use:	Panel
Content:	Polyester 100%
Width:	66"
Minimum:	440 yds
Type:	Custom Color



KnollTextiles

Standard Fabric Inspiration:
Versatility, Chalk W432/1

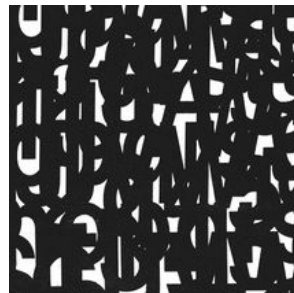
Merge Large Print, Mars QK38999.01

Standard Merge, Mars Black WC1034/7 was redeveloped as an enlarged print on a polyester panel fabric to meet the project application.



Product Points

Primary Use:	Panel
Content:	Polyester 100%
Width:	54"
Minimum:	300 yds
Type:	Reengineered

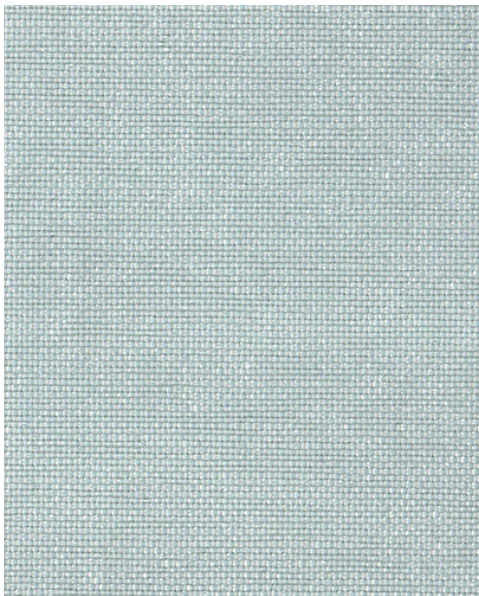


KnollTextiles

Standard Fabric Inspiration:
Merge, Mars Black WC1034/7

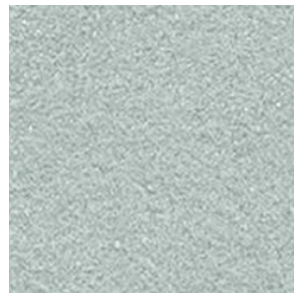
Glisten, Spa Blue QK38483

Client referenced standard Ultrasuede, Celadon K1021/21 as a color target to customize Glisten. Customs worked with the mill to develop a similar color with existing yarns.



Product Points

Primary Use:	Wallcovering
Content:	PIR Polyester 57%, Olefin 43%
Width:	54"
Minimum:	240 yds
Type:	Custom Color

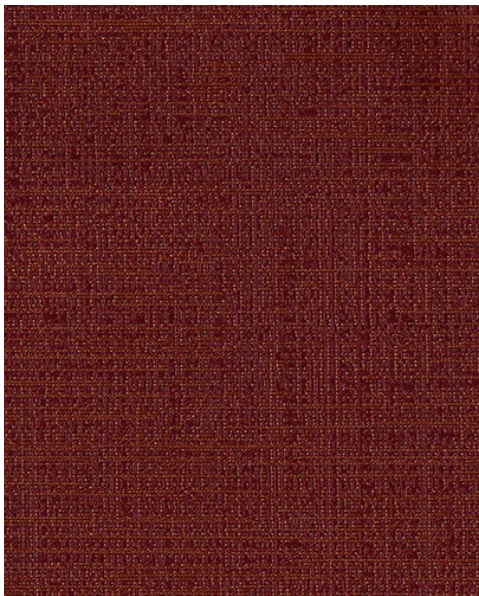


KnollTextiles

Standard Fabric Inspiration:
Ultrasuede, Celadon K1021/21

Innuendo, Autumn QK38980.01

The client provided color references to achieve the desired color appearance for the project. Customs worked with the mill to select yarns to custom color Innuendo WC1368.



Product Points

Primary Use:	Wallcovering
Content:	Polyester 100%
Width:	54"
Minimum:	120 yds
Type:	Custom Color

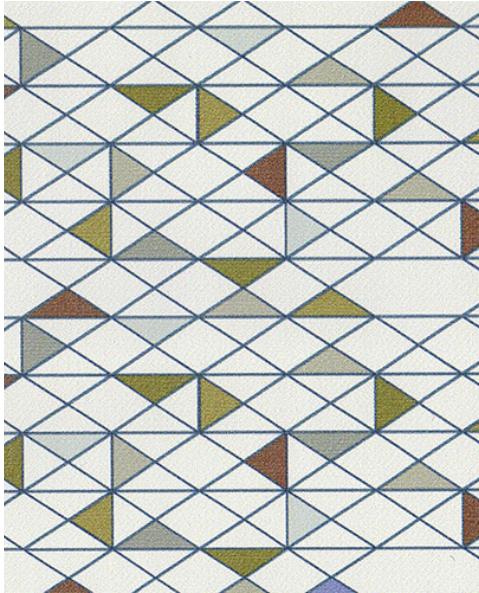


KnollTextiles

Standard Fabric Inspiration:
Innuendo, Declare WC1368/2

Nature Walk Wall QK38994.01

The customer requested a wallcovering version of upholstery fabric Nature Walk, Hillside K2081/2. Customs worked with the mill to translate the pattern onto a Type II vinyl wallcovering.



Product Points

Primary Use:	Wallcovering
Content:	Vinyl 80%, cotton backing 20%
Width:	54"
Minimum:	Please inquire
Type:	Reengineered

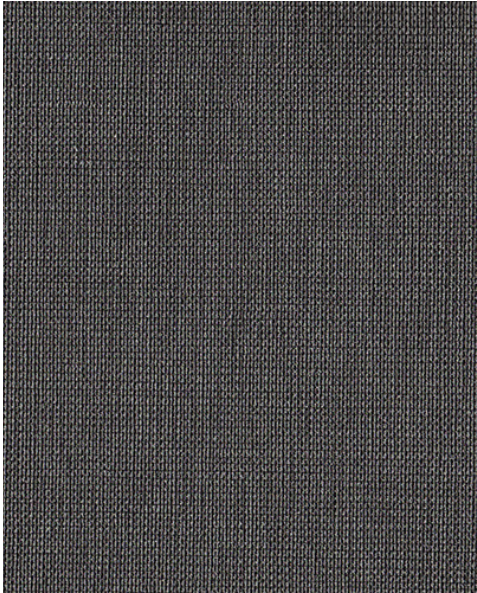


KnollTextiles

Standard Fabric Inspiration:
Nature Walk, Hillside K2081/2

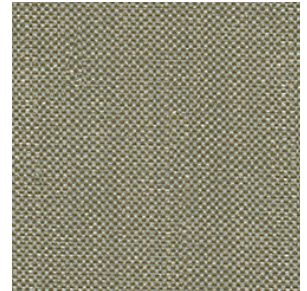
Linen Metallic, Charcoal QK38706.03A

Standard wallcovering Alias II, Hardware WC2113/9 was the inspiration for this project. The client wanted the appearance of a woven textile, however the budget was for a Type II wallcovering.



Product Points

Primary Use:	Wallcovering
Content:	Vinyl 80%, cotton backing 20%
Width:	54"
Minimum:	500 yds
Type:	Reengineered

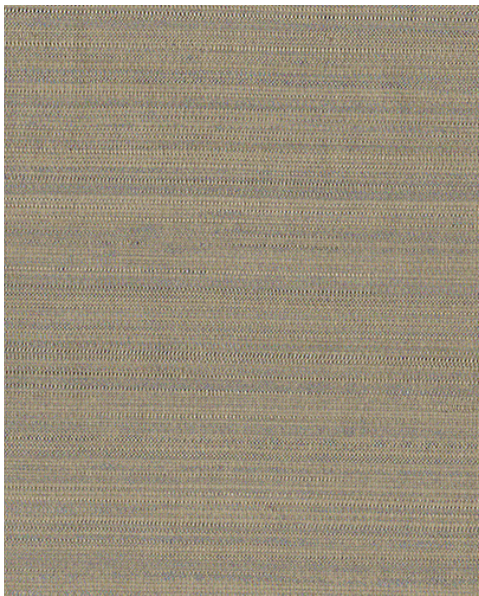


KnollTextiles

Standard Fabric Inspiration:
Alias II, Hardware WC2113/9

Metallic Spin, Taupe QK38697B

The customer requested a high luster version of Fine Print, Type Setting WC459/23. Customs worked with this mill to incorporate a metallic “spin” on the classic texture.



Product Points

Primary Use:	Wallcovering
Content:	Vinyl 80%, cotton backing 20%
Width:	54"
Minimum:	1000 yds
Type:	Reengineered

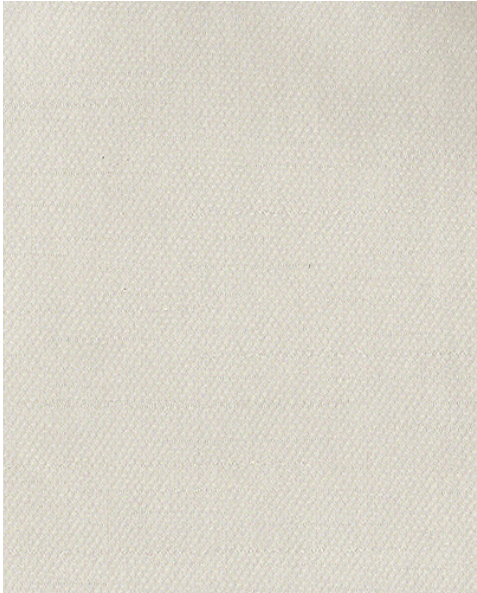


KnollTextiles

Standard Fabric Inspiration:
Fine Print, Type Setting WC459/23

Mica Plain, Mist QK38760

The customer wanted the wallcovering to have the appearance of silk but easily cleaned. Customs developed a Type II wallcovering based on a woven silk to meet the performance needed.



Product Points

Primary Use:	Wallcovering
Content:	Vinyl 80%, cotton backing 20%
Width:	54"
Minimum:	500 yds
Type:	Reengineered



KnollTextiles

Fabric Inspiration:
Silk Wallcovering

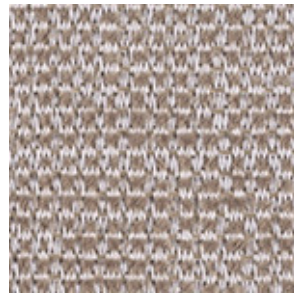
Tweed Wall, Pepper QK38995.01

Standard drapery fabric: Irving, Westport D2045/2 was the inspiration for developing this Type II vinyl wallcovering



Product Points

Primary Use:	Wallcovering
Content:	Vinyl 80%, cotton backing 20%
Width:	54"
Minimum:	500 yds
Type:	Custom Color, Reengineered



KnollTextiles

Standard Fabric Inspiration:
Irving, Westport D2045/2

Cleo Wall, Fox QK39030.01

Client was inspired by upholstery fabric Cleo Fox K2168/5 for a hospitality wallcovering. Customs developed a digital print version on a Type II vinyl wallcovering.



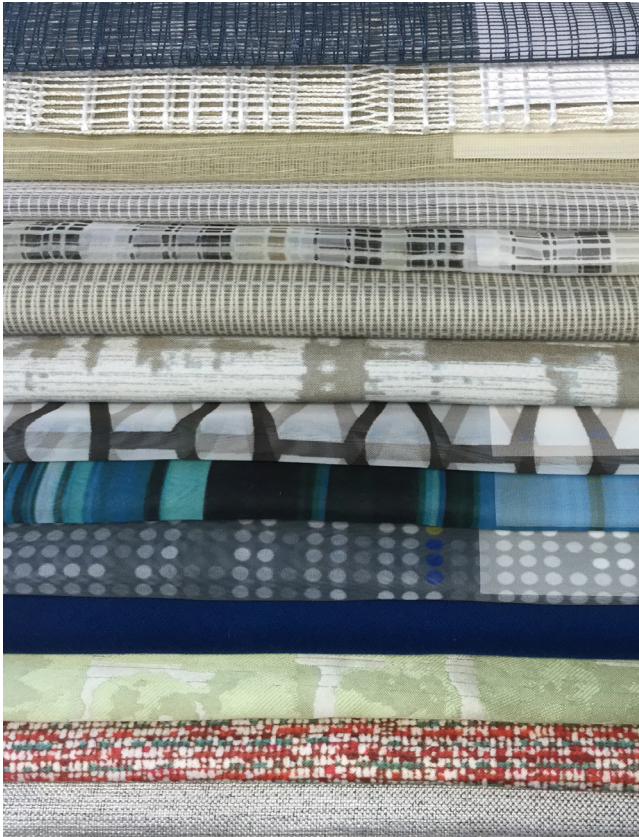
Product Points

Primary Use:	Wallcovering
Content:	Vinyl 80%, cotton backing 20%
Width:	42"
Minimum:	Inquire
Type:	Reengineered



KnollTextiles

Standard Fabric Inspiration:
Cleo, Fox K2168/5



Drapery Rotation

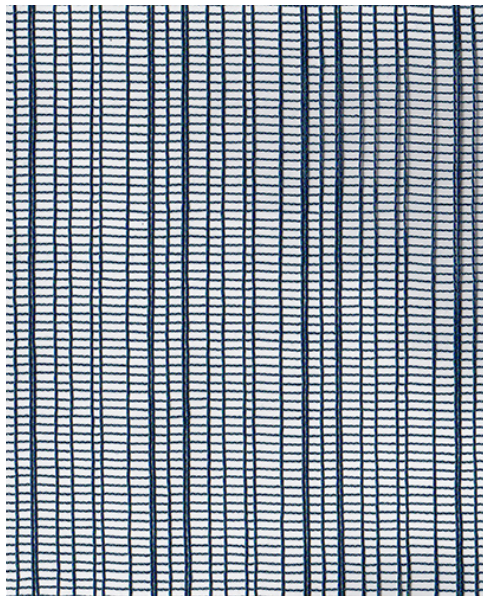
1. VE Fila, Aqua Farm (QK38745.04)
2. VE Escala, White (QK38993.01)
3. Amiral, Honey (QK38992.01)
4. VE High Note, Tempo (QK38844.01)
5. VE Divided Light, Soft Fade (QK38864.01)
6. Rush Hour Print, Hemp (QK38833)
7. Samos Print, Column (QK38997.01)
8. VE Air Rights (QK38998.01)
9. Isole VE, Tide Pool (QK38852.02)
10. Mod Jot, Night Light (QK38689.02)
11. Utmost, Aegean (QK38428.16)
12. VE Large District (QK39000.01)
13. Atelier Print, Fireworks (QK38996.01)
14. Blink, Beach (QK38855.01)
15. Kumasi VE, Odum (QK39025.01)

Draperies / Selling Points

- Wide width fabrics help reduce fabrication costs due to few seams required for an installation
- Piece-dyed products offer color matching to client's specification
- Different basecloths are available for digital printing which offer a range of choice for aesthetic and performance effects
- Some standard products can also be digitally printed, reducing minimums

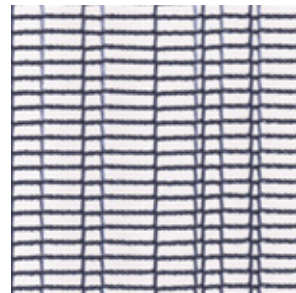
VE Fila, Aqua Farm QK38745.04

The customer specified Fila, Aqua Farm D1295/5 but needed a less expensive version to meet the project budget.



Product Points

Primary Use:	Drapery
Content:	Polyester 100%
Width:	118"
Minimum:	1000 yds
Type:	Reengineered

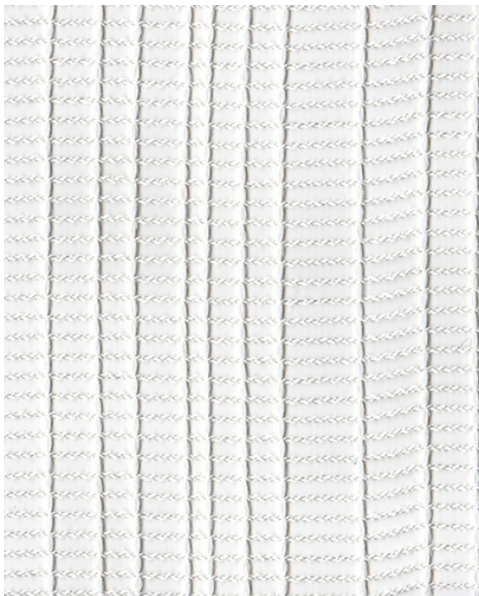


KnollTextiles

Standard Fabric Inspiration:
Fila, Aqua Farm D1295/5

VE Escala, White QK38993.01

Escala, White D1147/1 was the inspiration to redevelop a drapery that met the project budget while still maintaining the design aesthetic.



Product Points

Primary Use:	Drapery
Content:	Polyester 100%
Width:	118"
Minimum:	1000 yds
Type:	Reengineered



KnollTextiles

Standard Fabric Inspiration:
Escala, White D1147/1

Amiral, Honey QK38992.01

Louwer, Resin D1161/3 was the original specification on the project. Due to budget, Customs created a value priced version and also a custom color.



Product Points

Primary Use:	Drapery
Content:	Polyester 100%
Width:	118"
Minimum:	1000 yds
Type:	Reengineered, Custom Color

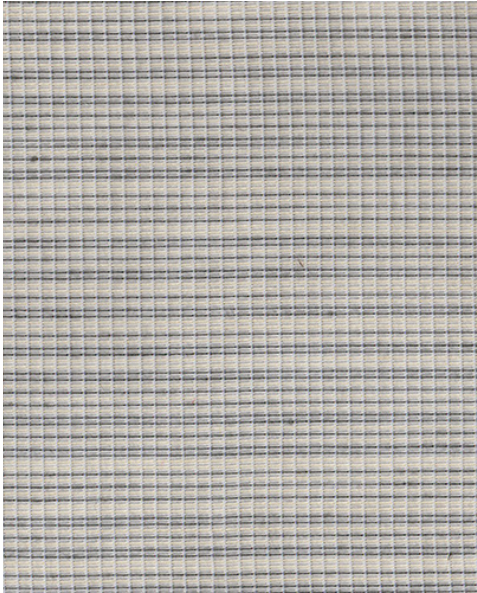


KnollTextiles

Standard Fabric Inspiration:
Louwer, Resin D1161/3

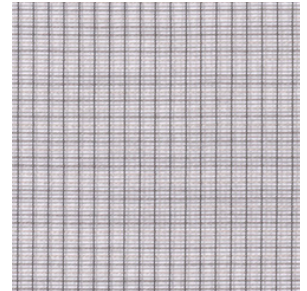
VE High Note, Tempo QK38844.01

Standard drapery: Highnote, Gust D1446/4 was specified but exceeded the project budget. Customs developed a value engineered version to meet the pricing requirements.



Product Points

Primary Use:	Drapery
Content:	Polyester 100%
Width:	118"
Minimum:	1000 yds
Type:	Reengineered

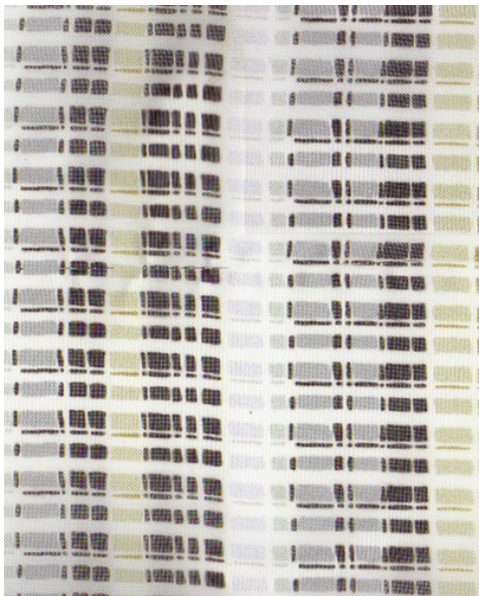


KnollTextiles

Standard Fabric Inspiration:
High Note, Gust D1446/4

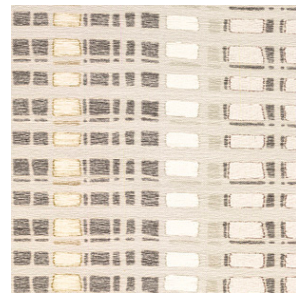
VE Divided Light, Soft Fade QK38864.01

The customer selected standard Divided Light, Soft Fade D1091/1. Due to budget, Customs created a value priced version to meet the specification.



Product Points

Primary Use:	Drapery
Content:	Polyester 100%
Width:	54"
Minimum:	300 yds
Type:	Reengineered

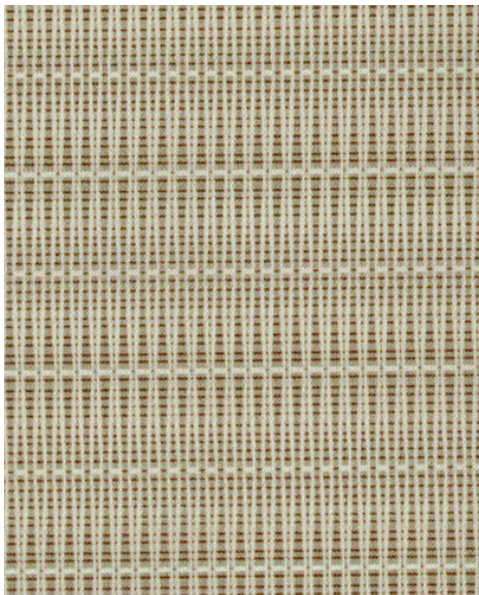


KnollTextiles

Standard Fabric Inspiration:
Divided Light, Cool Blue D1091/3

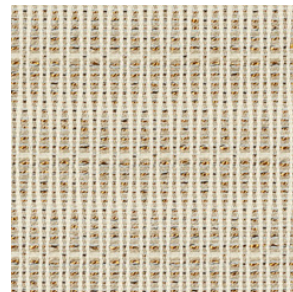
Rush Hour Print, Hemp QK38833

The customer selected upholstery fabric Rush Hour, Hemp K1824/1 for pattern and color. Customs developed a printed version on an FR basecloth for bedskirts.



Product Points

Primary Use:	Drapery
Content:	Polyester 100%
Width:	54"
Minimum:	300 yds
Type:	Reengineered

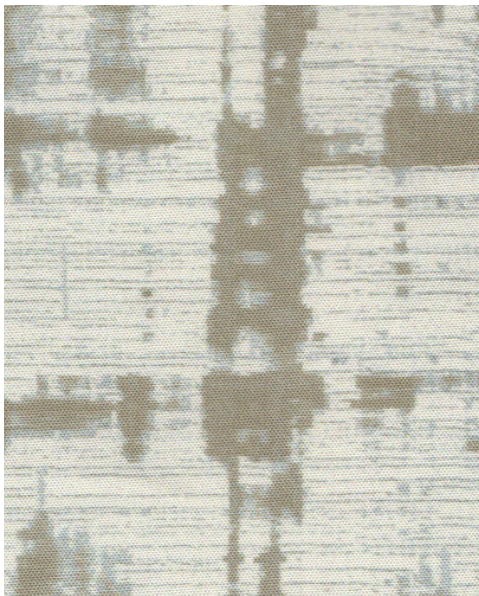


KnollTextiles

Standard Fabric Inspiration:
Rush Hour, Hemp K1824/1

Samos Print, Column QK38997.01

A printed version of Samos, Column D2060/2 was created for scale and application. The end use was for drapery as well as upholstered panels.



Product Points

Primary Use:	Drapery, panel
Content:	Polyester 100%
Width:	54" or 72"
Minimum:	300 yds
Type:	Reengineered

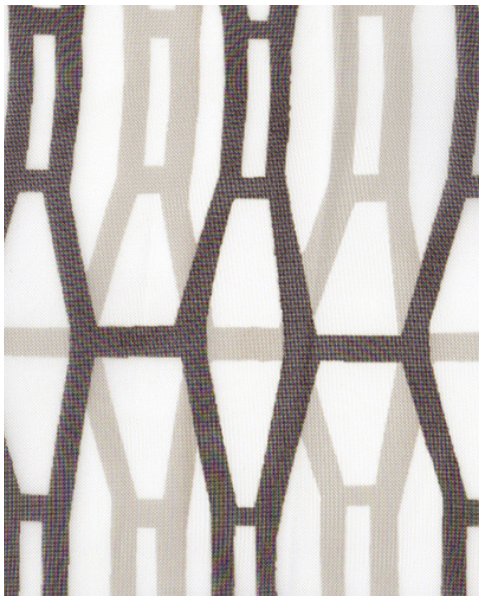


KnollTextiles

Standard Fabric Inspiration:
Samos, Column D2060/2

VE Air Rights QK38998.01

Standard Air Rights D1256 was selected for pattern but did not meet the project budget. Customs developed a printed version of the burnout drapery to meet the desired pricepoint.



Product Points

Primary Use:	Drapery
Content:	Polyester 100%
Width:	54"
Minimum:	300 yds
Type:	Reengineered

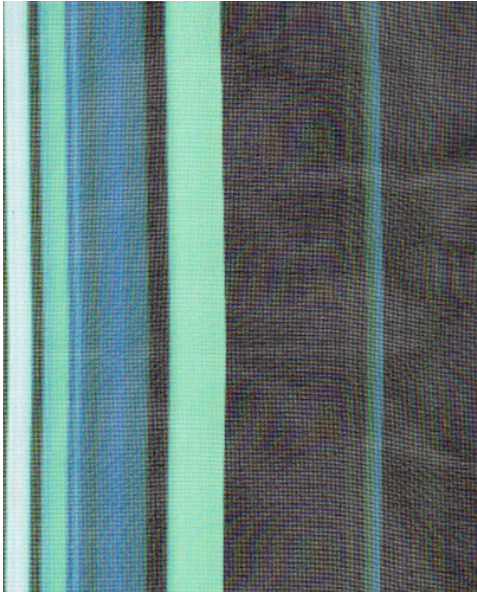


KnollTextiles

Standard Fabric Inspiration:
Air Rights, Comet D1256/8

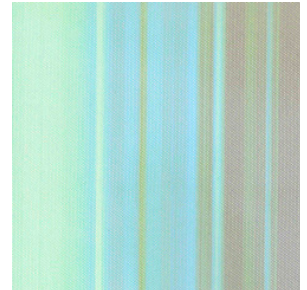
Isole VE, Tide Pool QK38852.02

Isole, Tide Pool D1810/3 was the client inspiration. Customs developed a printed version on a less expensive sheer basecloth to meet the project budget.



Product Points

Primary Use:	Drapery
Content:	Polyester 100%
Width:	58"
Minimum:	300 yds
Type:	Reengineered

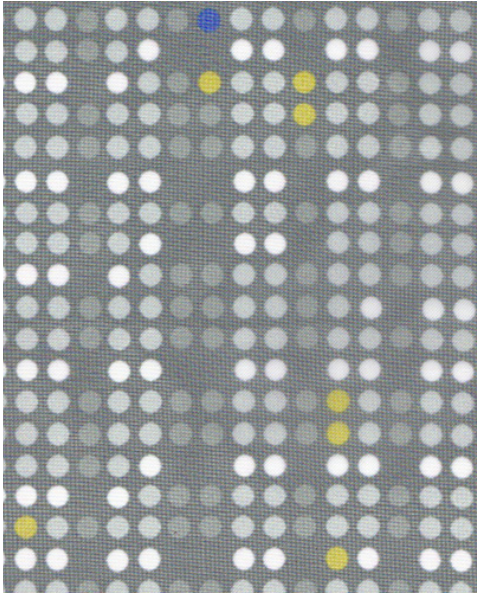


KnollTextiles

Standard Fabric Inspiration:
Isole, Tide Pool D1810/3

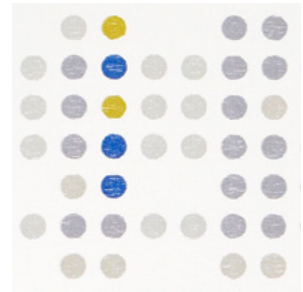
Mod Jot, Night Light QK38689.02

The customer selected Jot, Next Wave D1469/3 for inspiration but needed something less expensive and also a customized color. Customs reinterpreted the burn out as a printed drapery.



Product Points

Primary Use:	Drapery
Content:	Polyester 100%
Width:	54"
Minimum:	300 yds
Type:	Reengineered

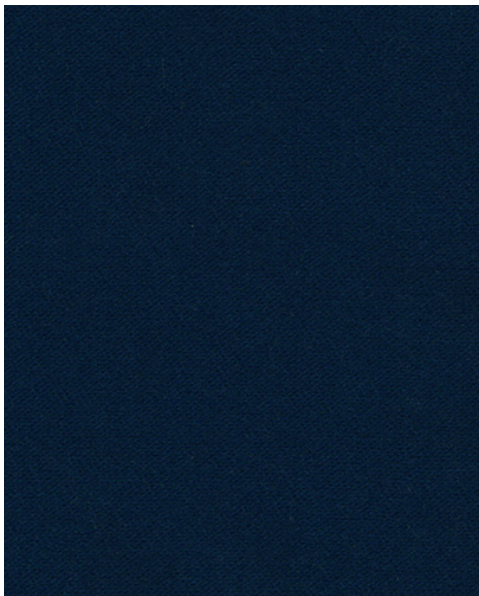


KnollTextiles

Standard Fabric Inspiration:
Jot, Next Wave D1469/3

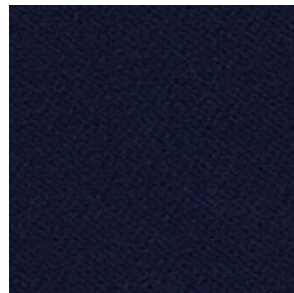
Utmost, Aegean QK38428.16

The customer provided a Pantone number to custom color Utmost K1325. Customs worked with the mill to create the special color for the client.



Product Points

Primary Use:	Drapery
Content:	Trevira CS Polyester 100%
Width:	54"
Minimum:	44 yds
Type:	Custom Color

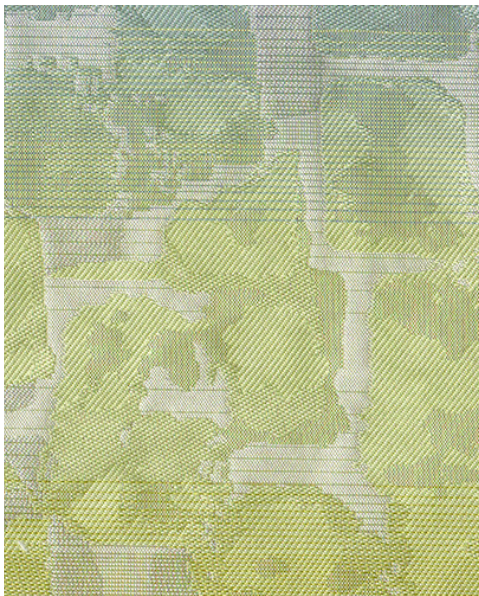


KnollTextiles

Standard Fabric Inspiration:
Utmost K1325/9 Blazer

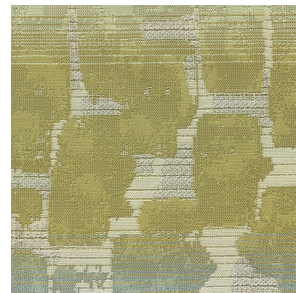
VE Large District QK39000.01

Standard drapery: District D1659 was selected for inspiration. Customs created an enlarged scale and value priced version to work within the project parameters.



Product Points

Primary Use:	Drapery
Content:	Polyester 100%
Width:	54"
Minimum:	1000 yds
Type:	Reengineered



KnollTextiles

Standard Fabric Inspiration:
District D1659/3 Sail

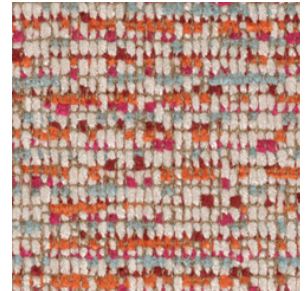
Atelier Print, Fireworks QK38996.01

A printed version of Atelier, Fireworks K1607/4 was developed to meet FR drapery application as well as project budget.



Product Points

Primary Use:	Drapery
Content:	Polyester 100%
Width:	54"
Minimum:	300 yds
Type:	Reengineered



KnollTextiles

Standard Fabric Inspiration:
Atelier, Fireworks K1607/4

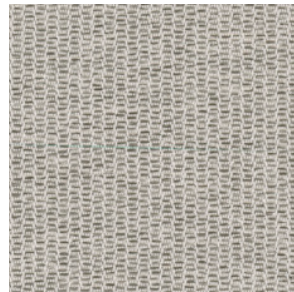
Blink, Beach QK38855.01

Customer needed a less expensive alternative to Rendezvous, Ice D1504/2. Customs sourced a similar dimmer and created a special color to match.



Product Points

Primary Use:	Drapery
Content:	Polyester 100%
Width:	54"
Minimum:	50 yds
Type:	Reengineered

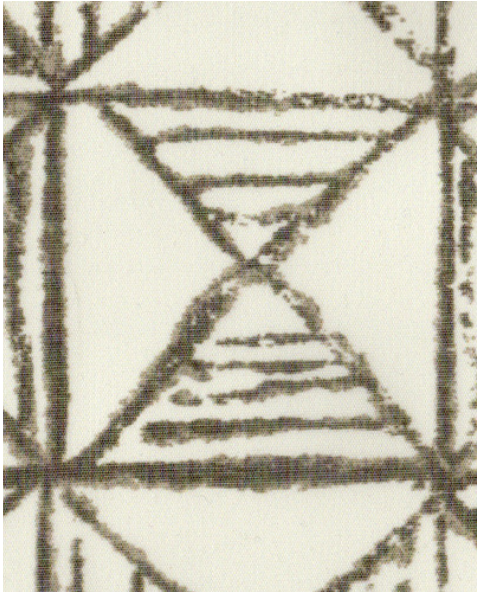


KnollTextiles

Standard Fabric Inspiration:
Rendezvous, Ice D1504/2

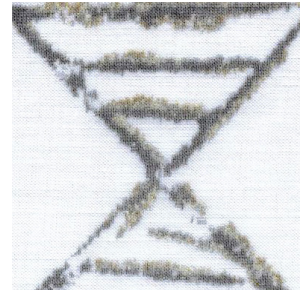
Kumasi VE, Odum QK39025.01

Client selected standard drapery Kumasi Odum D2042/2, however it did not fit the hospitality budget. Customs developed a digital print and printed the pattern on a less expensive base cloth.



Product Points

Primary Use:	Drapery
Content:	Polyester 100%
Width:	60"
Minimum:	100 yds
Type:	Reengineered



KnollTextiles

Standard Fabric Inspiration:
Kumasi Odum D2042/2